



RIDING A SCHOOL BUS WILL LOOK DIFFERENT THIS YEAR. BEDFORD CHARTER SERVICE IS USING MANY TOOLS ON OUR BUSES TO PROVIDE THE SAFEST TRANSPORTATION POSSIBLE.

**1. Social distancing**

One student per seat (unless assigned to sit with a sibling). *Seats will be assigned in advance* to avoid passing in the aisle of the bus as much as possible, although K will continue to be up front. Students MUST stay seated for the duration. High seat backs will double as Covid-19 barriers. *In order to ensure strict social distancing, passengers will not be allowed to board the bus if they are not pre-registered (to both bus and bus stop).* Students are not permitted to go home with a friend on a different bus this year.

**2. Ventilation**

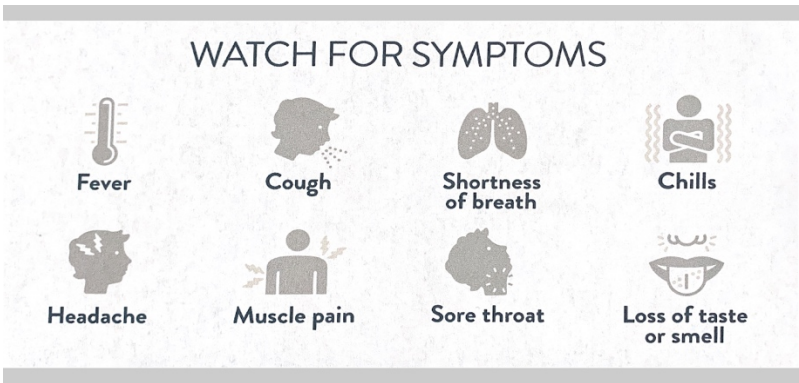
Windows and roof hatches will be open! Be prepared for it to get cold. Bring a sweatshirt or jacket, even for the fall. This is not the year to tough it out in shorts and a T-shirt in November (you know who you are!)

**3. Face coverings**

Students are not permitted on the bus without a face mask (a disposable mask or a fabric mask made with two layers). Face shields are not permitted unless worn with a mask.

**4. Symptoms**

Parents must screen students every day before boarding the bus. If you have *any* of these, stay home until you test negative:



**5. Sanitize**

Students must wash hands before coming outside to load the school bus. All buses will be sanitized using our electrostatic backpack sprayer on a daily basis, with additional “high touch” surface cleaning in between.

**6. Travel**

If a student (or driver) has travelled to any restricted states (see mass.gov for map) or out of the country, they must quarantine for 14 days or test negative.